

ANNUAL REPORT 2021



www.elitexnepomuk.cz

Annual Report 2021
Elitex Nepomuk, a.s.



Precise manufacturing

Content

Foreword	7
Company Profile	8
Projects 2021	10
Plans for 2022	24
Business Partners	26
Environment	34
Attachments	37

Foreword

Ladies and gentlemen,

The year 2021, like the previous one, was marked by a global pandemic and presented many new challenges for our company. We are happy to say that thanks to the continuous development of business relations with our partners, as well as long-term investment in technological development and professional qualification of our employees, we managed to successfully overcome all challenges and end 2021 on a very positive note. In 2021, very substantial investments were made in the company's machinery. A particularly important investment project was the purchase of a new laser cutting machine, which will greatly affect the speed and level of the sheet metal cutting operation. This will significantly increase the production capacity of this workplace, which is the initial operation for most products.

Another major investment was the acquisition of a new bending machine. A fourth machine has been added to expand the bending capacity.

Attention was also focused on investments in the modernisation of the production halls. Equipment on the paint lines was added and renewed. In line with the long-term plan to increase welding capacity, the production hall was also renovated and the manual welding workplace and the existing welding robot were moved there. A second Closs robotic welding workstation was purchased for this workstation.

In spite of the difficult situation on the world markets caused by the pandemic, we have been developing relationships with our customers in terms of existing serial production and new projects.

Cooperation with relatively new customers Trumpf and Heller also began to deepen significantly.

Thanks to extensive investment in modern plant equipment and the high expertise, skills and commitment of our employees, we can successfully produce high quality products for our demanding customers who are among the absolute leaders in their field on a global scale.

I firmly believe that we will successfully continue this trend in the coming year.

I would like to take this opportunity to thank all our customers, suppliers and employees for their very good cooperation in the past year.



Ing. Šárka Kotrbová

Managing Director

Company Profile

Company

Elitex Nepomuk, a.s.

registered in the Commercial Register, kept at the Regional Court in Pilsen, Section B, Insert 621, date of registration 1 August 1997

Name	Elitex Nepomuk, a.s.
HQ	Železniční 339, Dvorec, 335 03 Nepomuk
ID	25212567
Corporate bodies	Management Board



Scope of Activity

- Metalworking, tool manufacture
- Manufacture, installation, repair of electrical machinery and equipment, electronic and telecommunications equipment
- Machining
- Cafeteria service
- Production, trade and services not specified in annexes 1 to 3 trade act

Year 2021

This year we managed to achieve a turnover of 349 million CZK.

In 2021, the company had no research and development activities.
The company did not acquire any equity shares or equity interests.

elitemx



Projects 2021

New laser cutting machine TruLaser 1030

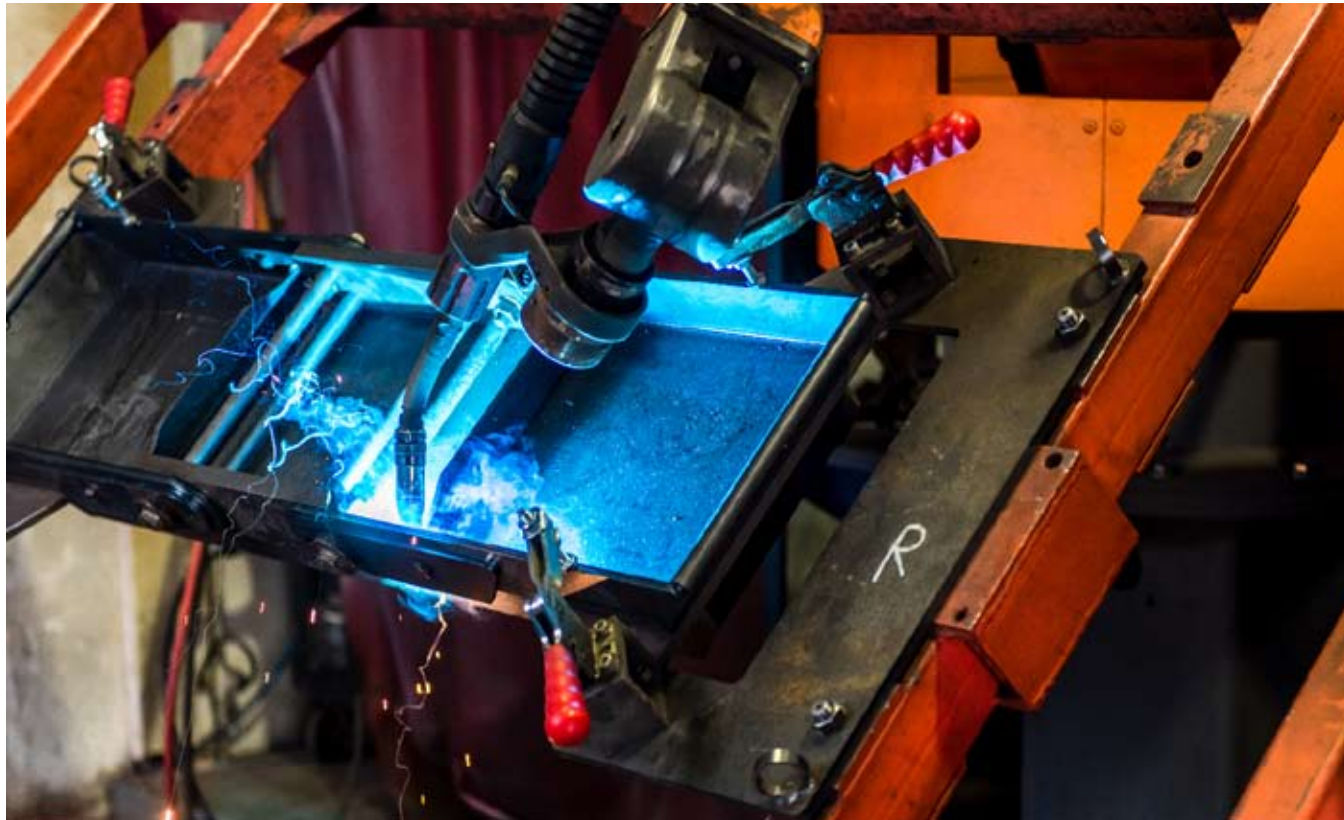


The most significant investment project of 2021 was the purchase of a new TruLaser 1030 laser cutting machine from Trumpf. This is an extraordinary technological advance in terms of both speed and quality of production.



Robotic workstation CLOSS

Another major investment was the expansion of welding capacity with the new CLOSS robotic workstation. The company now has two robotic welding workstations. Thanks to this, it is possible to perform welding operations automatically with the help of robots and thus ensure high efficiency and maximum quality of welded structures.



New lighting of the production hall

In the production areas of the sheet metal processing operations, a complete lighting replacement was carried out. This was a reconstruction of the production hall of par. no. 258.



Kaeser CSD 125 compressor



A new Kaeser CSD 125 compressor was also purchased. This is a machine from the screw compressor series that not only produces more compressed air with minimal consumption, but is also characterised by its versatility, ease of operation, maintenance and environmental compatibility.

The above investments, i.e. Robotic workstation Closs, Tru-Laser 1030 and lighting on par.no.258 , were purchased from the subsidy within the framework of the Call Energy Savings V and VI, PO- 3-"Efficient energy management, development of energy infrastructure and renewable energy sources, support for the introduction of new technologies in the field of energy management and secondary raw materials, for the project entitled "Implementation of energy savings in ELITEX Nepomuk a.s." , registration number of the project CZ.01.3.10/0.0/0.0/19_251/0018898 , and the

Kaeser CSD125 compressor v.no.6821 was purchased from the subsidy for the project entitled " Realization of energy savings II in ELITEX Nepomuk a.s. " , registration number CZ.01.3.10/0.0/0.0/20_370/0025722.

TruBend 5085 bending machine

In addition to the new laser cutting machine, the sheet metal processing department was expanded with a new TruBend 5085 bending machine from Trumpf. The new machine complemented the existing three bending presses and significantly increased the bending capacity.



Building land

In 2021, the company also purchased the grounds of the former coal warehouses in Dvorec, building plot No. 195.



Reconstruction of the welding hall



In accordance with the long-term plan for the expansion of production and storage capacities, the welding hall, painting line and material warehouse were reconstructed. This renovation of the production hall also included the purchase of a new overhead crane from FERRO OK. The painting equipment was also supplemented with a new Airfluid spraying machine.

Vehicle park expansion

The company's vehicle park has been expanded with a new Peugeot Boxer Furgon Active 3500.



The Academy for Masters

In 2021, the production leader successfully completed the Academy for Masters course, culminating in a certificate from the IHK-Akademie in Ostbayern and the Czech-German Chamber of Commerce and Industry. The Academy for Masters “Industrial Professional” provides valuable know-how, especially in the areas of organisation and personnel management. A trained manager should be able to take responsibility for organisational units and projects in industrial production and to lead and motivate their team. The course is designed as intensive training with an emphasis on practical skills development. The concept also includes a moderated exchange of experience directly in the individual companies. The company has been cooperating with the Academy for Masters for several years as part of a long-term project to develop the professional qualifications of managers.



Plans for 2022

The main goal for 2022 is the complete reconstruction of the oldest paint line. This will result in a major expansion of capacity to a total of 3 painting lines and a significant modernisation of the painting equipment. Another goal for the following year is the purchase of an automatic blasting machine. The blasting operation is an essential basis for a good quality finish and in line with the development of the paint shop, the pre-treatment department will therefore also be strengthened. Last but not least, the reconstruction of the waste water treatment plant is planned, which will have a very positive impact on the environment.



Business Partners

Homag Group

In the field of engineering production, the company has long been cooperating with leading European and global partners. The main emphasis is on building stable and long-term partnerships. Components and assemblies for construction, woodworking, textile and CNC machine tools are produced.

One of the company's largest customers is the Homag Group. The cooperation takes place with the Polish and German representation of this company. It is a world leader in the woodworking machinery sector with an estimated 30% share of the world markets and more than 7,000 employees. Electrical switchboards, control panels or extraction and other assembly elements are produced for this customer with a long tradition.



Caterpillar



Caterpillar is the world's leading manufacturer of construction and mining equipment with nearly 100 years of tradition. The most extensive cooperation with this customer is in the production of wheeled excavators. For this product line, enclosure kits, tool boxes, stairs, as well as high-precision welded structures for the installation of cooling systems, for example, are produced. Deliveries of

these parts are mainly destined for Grenoble, France. In recent years, the business relationship has also been extended to include cooperation with Caterpillar in Italy.

In the field of light precision engineering for wheeled excavators, Elitex Nepomuk has long been a strategic partner for Caterpillar.

Unac

Another major customer specialising in excavator manufacturing is Unac, which has a tradition of more than 40 years in excavator manufacturing. The main cooperation between Elitex and Unac is in the production of the rail excavators.



Hamm



Another major customer, Hamm, is also active in the construction industry. Together with the other brands Wirtgen, Vögele, Kleemann and Benninghoven, they form the internationally operating Wirtgen Group of companies in the construction machinery sector. With more than 9,000 employees, this is another extremely strong partner on a global scale. For Hamm, various types of oil tanks and other assembly elements are mainly produced.

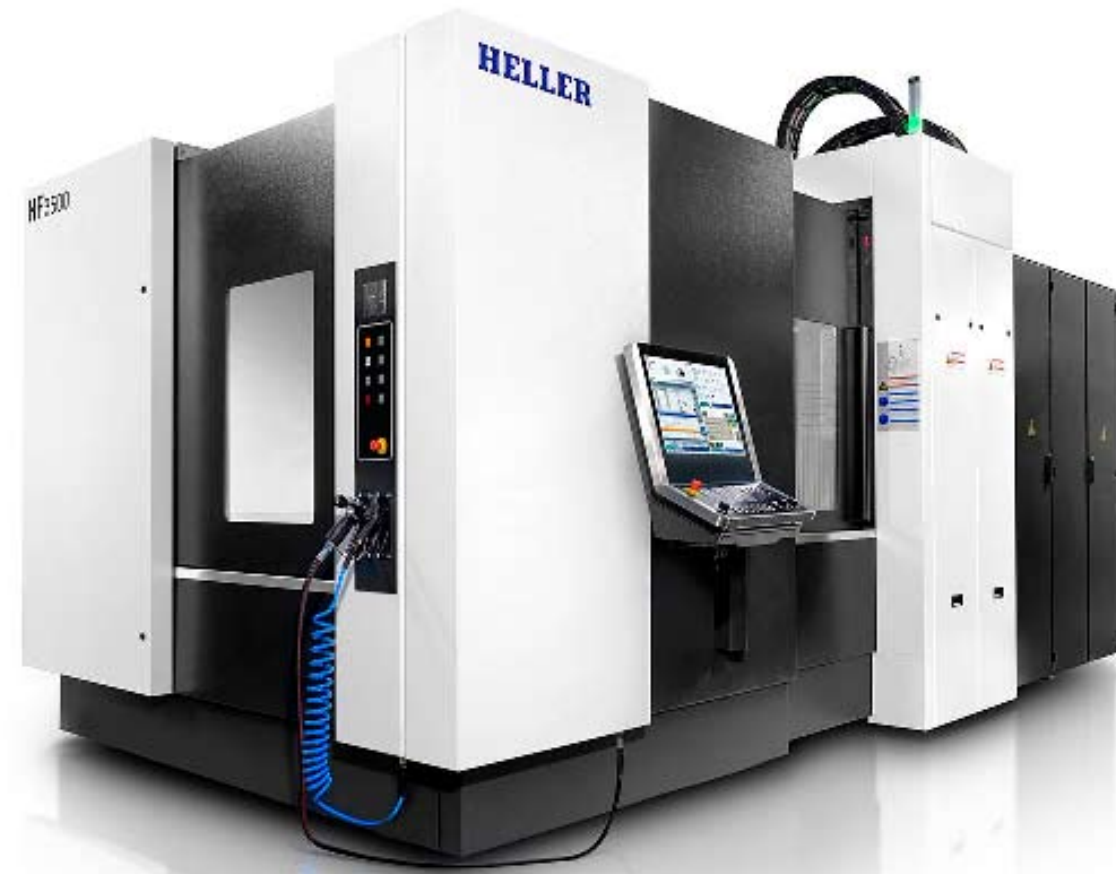
Rieter



Rieter, a company specialising in textile machinery, is also a long-standing partner. The main cooperation is with Rieter CZ, based in Ústí nad Orlicí, which is part of the Swiss Rieter Group and deals with assembly and service activities in the field of spinning machines. In the last few years, cooperation on projects for the production of new product lines of textile machines has been significantly expanded.

Heller

Trumpf



In recent years, cooperation with new very important customers has been established and gradually developed. One of them is Heller. This is a global group developing and manufacturing the most advanced CNC machine tools and production systems for machining. Highly complex electrical controllers are currently being produced for this customer in regular series production.

Another relatively new customer is Trumpf. Over the last few years, relationships have been gradually built up with Trumpf in Germany and the Czech Republic. The main business area is machine tools and laser systems for flexible sheet metal and tube machining. For this customer, high-visibility cover sets or control panel elements with high demands not only on dimensional accuracy but also on the level of surface finish are produced. The cooperation with the two newly introduced customers has been very successful from the start and there is thus great potential for further collaborations.



Environment

The newly acquired technologies are mainly related to machining, welding, manipulation technology and testing equipment and do not have a negative impact on the environment. The equipment purchased is selected to be as environmentally friendly as possible. The upgraded equipment is of higher technology than the original, thus reducing energy consumption and having a positive impact on the environment.





Attachments

Audited financial statements
Auditor's report



Elitex Nepomuk, a.s.
Železniční 339, 33501 Nepomuk
Tel.: +420 371 591 111
fax.: +420 371 591 113
e-mail: vedeni@elitexnepomuk.cz
www.elitexnepomuk.cz